

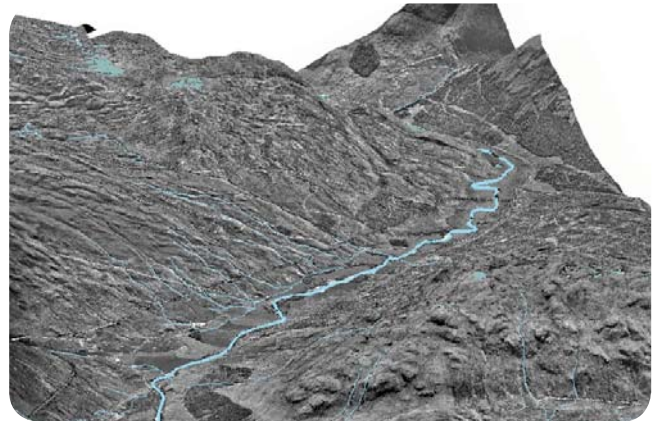
# Surface Water Management

Surface water requires careful consideration and management in development projects both during the construction and operational phases. Development can impact on the natural or existing drainage patterns within a site with significant effects on habitat, flooding and water quality.

With future climate predictions of more frequent extreme rainfall events, EnviroCentre can provide technical expertise and experience to manage surface water throughout the full life cycle of a development. Working closely with clients and regulators, and effective and innovative solutions are all required to competently discharge obligations with regard to environmental protection.

## Key Services:

- Hydraulic Assessment & Modelling;
- Surface Water Drainage Assessment;
- Surface water modelling using advanced software packages;
- Sustainable Drainage System (SuDS) Design (Construction and operational phases);
- Surface Water Management Planning, Risk Assessment and Pollution Prevention Control;
- Construction Team Support;
- Ecological Assessment;
- River realignment and restoration.



## Clients:

- Property Developers;
- Local Authorities;
- Construction Professionals;
- Heavy Industry

## Key Projects:

Surface water drainage assessments and appropriate pollution prevention design measures for a range of construction sites and developments.

Construction supervision of major developments and provide on-site pollution prevention advice.

## Related Services:

- GIS Mapping and Support
- Flood Impact Assessment
- River Restoration Design
- Wetland Management

